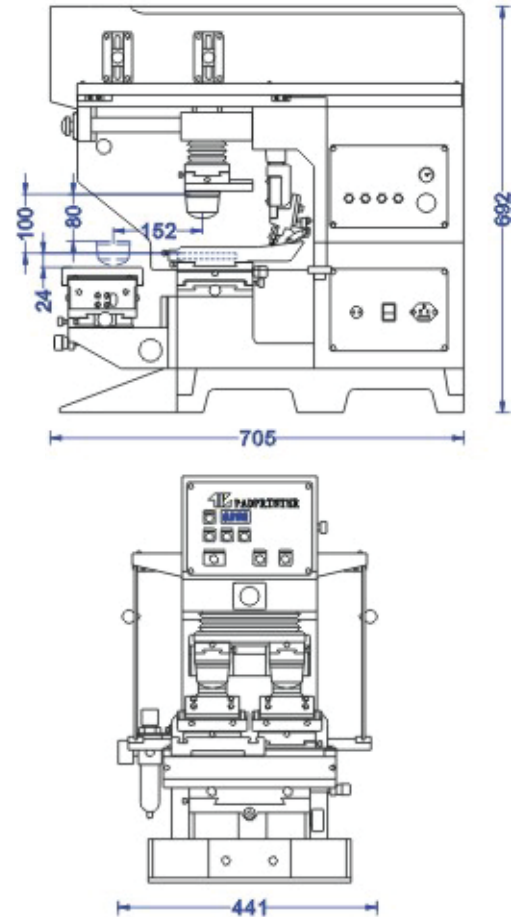


## FUNCTION

1. This series of pad printers are widely used in the industries of plastic goods, stationary, toys, electrical appliances, ceramic goods, shoes, leathers, papers, wooden goods and cosmetics, etc.
2. This series of pad printers are equipped with advanced microcomputer controls. With multi major function program presenting, the machines are multi functional.
3. Once a functional program is selected, it will be stored in the memory forever. It is not necessary to re-preset the functional programs in the event of power failure, and no back-up batteries are needed.
4. Various pad printing functions can be selected directly by pressing the sensitive feather-touch buttons on the console panel. It is very simple to operate.
5. The up-to-date and durable pneumatic components are manufactured by famous West German and Japanese factories. They all operate smoothly and powerfully.
6. The aluminium alloy machine case is light and durable, its structure is precise and causes higher efficiency.
7. Having a prevalent performance, it is equipped with special vibration absorber, speed - adjustable blades or pressure adjustable inkcup.
8. The precise hard axle reduces the friction caused by the movement of machine when printing and has good rust resistance.
9. It can be used for non-flat surface with a function of pre-stoppable adjustment for pads.

## TIC-183S



## SPECIFICATIONS

MODEL	型号	TIC183S	TIC183SC
Color	印刷颜色	Two Color 双色	
Function	功能	Shuttle 直推式工作台 Pitch 127mm 中心距127mm	
Configuration	配置	Open ink system 开放式油盘	Closed ink system 密闭式油盘
Steel plate size	钢板尺寸	100x100mm	100x250mm
Ink cup size	可装油盘直径	∅ 70,82,90*mm	
Max. speed	最大印刷速度	1100cycle/hr 小时	
Printing force	胶头压力	1020N(105kg)at 6 bar	
Air pressure	气源压力	0.4 MPa (4bar)	
Machine dimension	机身尺寸	705x441x692mm	
Packing dimension	包装尺寸	840x530x860mm	
Weight	机身重量	71kg	
Power	电源	110V or 220V 60/50Hz 40W	

For standard configuration